



# Research Opportunities



## at the University of Florida College of Dentistry

We are an international leader in oral health research with programs spanning a broad spectrum of basic, behavioral and clinical sciences, using cutting-edge technologies to improve oral and overall health. More than 100 members of our faculty, staff and students are actively engaged in research, collaborating with researchers across the UF campus and throughout the world.

Our faculty are dedicated to training the next generation of scientists through programs that support graduate, dental and undergraduate students at UF.

## DMD/PhD Program Research Track Summer Research Program

Inside are highlights and general information about the goals and format of the programs. For detailed information, please visit the UF College of Dentistry website at [www.dental.ufl.edu](http://www.dental.ufl.edu) and click on the "Research" tab.



## University of Florida College of Dentistry



## Excellence in teaching, research and service

For more information about our  
research programs, please contact:

**Office of Research**  
**UF College of Dentistry**  
**P.O. Box 100405**  
**Gainesville FL 32610**

**352-294-5444**  
**[office-of-research@dental.ufl.edu](mailto:office-of-research@dental.ufl.edu)**

**[research.dental.ufl.edu/](http://research.dental.ufl.edu/)**



## University of Florida College of Dentistry



# Research Opportunities

for UF graduate, dental and undergraduate students







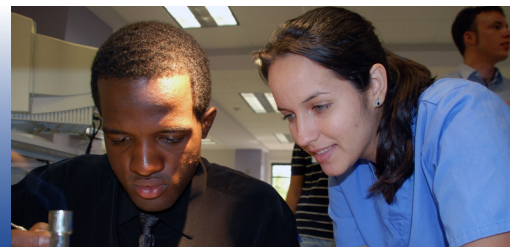
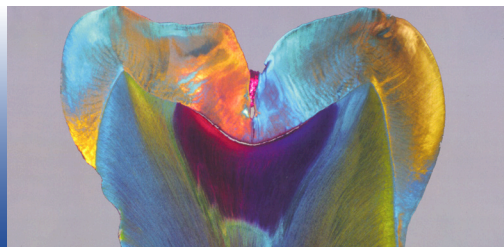
## DMD-PhD Program

This dual degree program is offered in collaboration with the UF College of Medicine Interdisciplinary Program in Biomedical Sciences (IDP) and prepares students for an academic career using skills acquired in clinical education, clinical practice, and basic and translational research.

- Minimizes redundant basic science and research coursework, reducing the time needed to obtain both degrees by one to two years.
- IDP offers six PhD degree programs in the biomedical sciences.
- Students take normal DMD curriculum for the first three years. The next four years, students complete requirements for their senior DMD year and begin formal PhD training.
- Simultaneously progressing and maintaining clinical skills, students learn to balance research with clinical duties, a work pattern required by dental school academicians.
- Degrees are awarded after student completes both degree requirements.
- Students can apply at the same time as when applying to the DMD program, or any time after acceptance into the DMD program until midway through the third year.
- Students must be accepted into the DMD program or be a DMD student in good standing for consideration and must also meet entrance criteria for the IDP PhD program (<http://idp.med.ufl.edu/admissions/>).
- Once entered into this program, whether at the beginning of the year 1 or up to the beginning of the year 4, students receive a stipend (\$22,032 for 2013-2014) plus funding for part of the DMD tuition (\$21,000 for 2013-2014).
- After entering the IDP PhD program in year 4, students receive the ongoing IDP stipend (\$26,883 for 2013-2014) and all PhD tuition and fees are covered.

### For more information:

[idp.med.ufl.edu/  
dental.ufl.edu/admissions/dmd-program/dmd-phd-program/](http://idp.med.ufl.edu/dental.ufl.edu/admissions/dmd-program/dmd-phd-program/)  
David J. Culp, PhD, Professor of Oral Biology  
DMD-PhD Coordinator  
[dculp@dental.ufl.edu](mailto:dculp@dental.ufl.edu) 352-273-8853



## Research Track Program

The Research Track integrates an intensive research experience into the dental curriculum and provides dental students with an enhanced opportunity to conduct meaningful research. It is intended for students who want a concentrated research experience during dental school, and may have an interest in an academic career.

The goal is for students to maintain a connection with clinical, translational or laboratory research during dental school and requires an average commitment of four to six hours per week. Specific activities and timing is coordinated by the student and their mentor.

### Participants are required to:

- Complete a first year seminar elective course.
- Be a member of in the Student Research Group chapter of AADR with dues paid by the college.
- Uphold continuous involvement in a mentored research experience (minimum of two consecutive years).
- Receive certification by the primary mentor that the student has completed a research project.

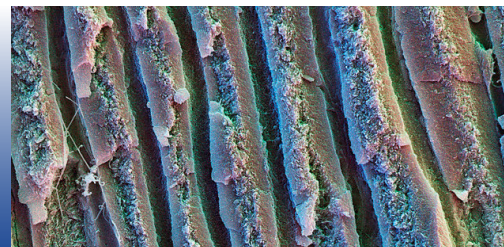
Interested students should select a mentor from the eligible mentors (listed on Research Track website) and schedule a meeting to develop a plan. Students work with the mentor to complete the UFCD Research Track Program application.

A committee reviews applications and makes participant selection recommendations to the Associate Dean for Research.

Students who complete the track are eligible for Research Track Honors and High Research Track Honors. (Students who do not participate in the Research Track program remain eligible for Research Honors and High Research Honors by satisfying current requirements.)

### For more information:

[research.dental.ufl.edu/resources/programs/student-resources/research-track-program/](http://research.dental.ufl.edu/resources/programs/student-resources/research-track-program/)



## Summer Research Program

The Summer Research Program provides incoming freshmen dental students an opportunity to conduct a 10-week research project, under faculty direction, the summer before their freshman year. No prior research experience is required.

This structured experience allows students to foster relationships with faculty and become familiar with the college before starting dental school.

Students team with a faculty mentor and conduct a research project, working on their project and meeting with mentors, educators and other students during the summer. Participants complete a research abstract and give an oral presentation. Many attend local, national and international research meetings.

Guest speakers share insight on various topics including highlights of current faculty research projects, responsible conduct in research, and preparing a scientific abstract.

Interested applicants should send an application (posted on our website), questionnaire, official transcripts and a letter of recommendation from a research mentor, science instructor or someone knowledgeable of your research interests or experience.

Applications are due in mid-March and program participants are selected and notified in early April.

Participants are required to attend the Summer Research Program full time.

### For more information:

[research.dental.ufl.edu/resources/programs/student-resources/summer-research-program](http://research.dental.ufl.edu/resources/programs/student-resources/summer-research-program)  
UFCD Office of Research  
352-294-5444  
[office-of-research@dental.ufl.edu](mailto:office-of-research@dental.ufl.edu)